

Remember how we looked?



We've come a long way



MEET THE NEW FACES OF ASIAN AMERICAN THEATRE

MONDAY MARCH 9 @ 8PM
E NANA I KE KUMU: LOOK AT THE SOURCE
LEILANI CHAN
 Dance and Performance Workshop

Distinctive solo performer Leilani Chan's stirring *E Nana I Ke Kumu: Look to the Source* blends contemporary theatre and performance art with the traditional and ancient Hawaiian art form of hula. Present day characters voice the struggles of identity, displacement, and survival in a colonized land. With the coming of the Centennial of the Annexation of the Hawaiian Islands in August 1998, this timely work exposes the complexity hidden behind the smiles of the "happy natives."

TUESDAY MARCH 17 @ 8PM
 APAF Reading Series
STOP KISS
DIANA SON
 Play Reading

While having their first kiss in a park, Callie and Sara are viciously attacked. Through two intertwining narratives, flashbacks of their unexpected attraction and dealing with the aftermath of the bashing in the present, Callie confronts the people who perceive her as the lesbian who let her lover get beat. Prior to the kiss, Callie and Sara were on the brink of starting something, but who gets to name the content of the kiss?

TUESDAY MARCH 31 @ 8PM
 Special Event
MAY
DORIS BAIZLEY
 Play Reading

ATW and the Taper's Writers Workshop are proud to host noted L.A. playwright of *Tears of Rage* and *Mimi's Guide*. Doris Baizley closes the final chapter of her trilogy with this new play set in 2014 A.D. In an archaeological site on a Greek island, an aging icon of the 60's counter-culture, Mimi, and her twenty-year-old Vietnamese American daughter, May, engage in a battle of wills and discover new connections between the Trojan War and the Vietnam War, history and myth, women and warfare and each other.

MONDAY APRIL 13 @ 8PM
THE LANDSCAPE OF THE HEART
JUSTIN CHIN and
RUSSELL LEONG
 Spoken Word Performance

Love, longing, lust and loss are just some of the themes you will hear from the provocative and elegiac words of performance artist and poets, Justin Chin and Russell Leong, as they take to the stage in an intimate evening of poetry about the Asian gay male. Bask and surrender to their words charged with sensuality, eroticism, lyricism and emotion. Venture deep into the pulsating and complex landscape of the human heart. Warning: This spoken word performance contains explicit language and adult situations that may not be suitable to all audiences.

MONDAY MAY 11 @ 8PM
 APPEARANCES
PAULA WESTON SOLANO
 Directed by Jessica Kubzansky
 Performance Workshop

Actress/comedienne Paula Weston Solano's characters are keeping up, eating away, surgically altering, and making appearances through different decades of 20th century America. From the lyrical to the outrageous, the political to the personal, these Asian women experience what happens when there's too much or just not enough.

MAY 28 THROUGH JUNE 14 ONLY!
 Cornerstone Theatre in association with ATW & East West Players
A BEAUTIFUL COUNTRY
CHAY YEW
 Directed by Bill Rausch
 A World Premiere

A part of Cornerstone Theatre's Broadway/Hill (Chinatown) residency, *A Beautiful Country* chronicles the colorful and rich history of Asians in America for the last century seen through the eyes of an immigrant drag queen, Miss Visa Denied. From the plight of Filipino farm workers in California and the ousting of Chinese residents from Seattle, to the ruthless death of Vincent Chin and the razing of L.A.'s Nigger Alley in Chinatown, Visa bares witness to the disturbing and celebratory sociopolitical stories that shape the tapestry of Asian Americans in a provocative multi-disciplinary, multi-media performance. Call Cornerstone at 310-449-1700 for venue and show information.

TUESDAY JUNE 2 @ 8PM
 APAF Reading Series
TEXAS
JUDY SOO HOO
 Play Reading

In the dark and humorous tradition of Orton, Mamet and Shepard, Los Angeles playwright Judy Soo Hoo invites you to the cramped trailer of Duke and Danny, two smart-talking Asian American brothers living in the flats of Texas. When Steve, a college freshman, comes to stay, the trio plays a ruthless series of physical and mind games throughout the night. All hell breaks loose when Steve uncovers the terrible and funny secrets and lies about the two brothers.



MONDAY JUNE 8 @ 8PM
TALKING WITH MY HANDS
JAMES SIE
 Workshop Performance

Embark on a touching and funny journey with performer James Sie as he recounts growing up in a Chinese-Italian household. With humorous stories of his life in New Jersey, moving tales of his grandparents from two continents, and witty anecdotes of his career as an actor in Chicago, join Sie on his quest for racial identity and the perfect zuppa di polla (chicken soup).

MONDAY JUNE 15 @ 8PM
MRS. DU
JUNE K. LU
 Reading of a Play-in-Progress

On March 16, 1991, on the eve of the Los Angeles riots, Korean grocer, Soon Ja Du, shot fifteen-year-old Latasha Harlins in the back of her head as she was leaving the store. A schoolgirl, Harlins, had apparently struggled with Du over an unpaid bottle of orange juice found in her backpack. In this controversial incident, veteran actress June K. Lu paints a stirring and vivid portrait of Mrs. Du, set against a fiery backdrop of racism, American immigration, and intercultural differences in South Central L.A.

Dear Friend:

From Tony Randall in *The Seven Faces of Dr. Lao* and Peter Sellers in *Murder by Death*, to David Carradine in *Kung Fu* and Jonathan Pryce in *Miss Saigon*, Asian Americans have long been portrayed on stage, film and television by non-Asians. For decades, the world has judged and experienced us through two-dimensional, stereotypical images and stories that continue to haunt and define us today.

Since its inception in 1995, Mark Taper Forum's Asian Theatre Workshop has diligently sought to claim and tell the myriad stories of Asian America, and to give voice to our diverse and unique playwrights, directors, performers and actors in the American theatre.

For us to continue our mission at Asian Theatre Workshop, we need your support and your presence. Please come to these events and see the real face of Asian America.

Chay Yew
 Director, ATW

MARK TAPER FORUM

Gordon Davidson, Artistic Director
 Charles Dillingham, Managing Director
 Robert Egan, Producing Director
 Douglas Baker, General Manager
 Corey Madden, Associate Artistic Director
 June K. Lu, APAF Reading Coordinator

All performances held at the Falcon Theatre. Tickets are free. Seats available on a first-come, first-serve basis one half hour prior to curtain.

Mark Taper Forum
ASIAN
 Theatre
WORKSHOP

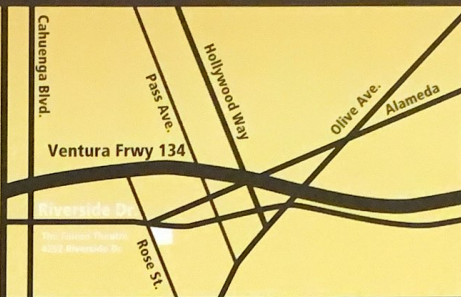
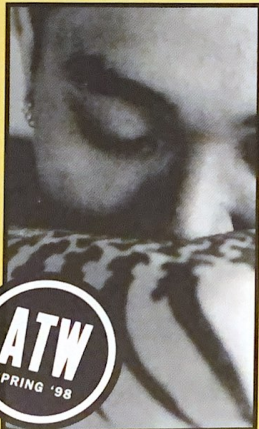
ASIAN THEATRE WORKSHOP serves Asian communities in Los Angeles by developing new and provocative Asian American theatre and providing public forum for theatre artists. ATW's programs include the APAF Reading series which presents new plays to audiences; play commissions to Asian American playwrights and performers; the Lounge Series; the Black Box Performance Series and productions of new Asian American theatre work.

ASIAN THEATRE WORKSHOP is a participant of *THE WING: New Theatre Taking Off* presented by the Mark Taper Forum in association with DreamWorks SKG and the Falcon Theatre.

ATW is made possible in part through grants from the National Endowment for the Arts; California Arts Council; the Los Angeles County Arts Commission; City of Los Angeles Cultural Affairs Department; and the Music Center Unified Fund. ATW is also funded and supported in part by Asian Pacific American Friends of Center Theatre Group.

ASIAN PACIFIC AMERICAN FRIENDS (APAF) OF CENTER THEATRE GROUP was established in 1986 to broaden participation of Asian Pacific American artists in mainstream theatre and audience involvement in all facets of programming and new work development.

UNITED AIRLINES
 is the official airline of Center Theatre Group.



FALCON THEATRE
4252 Riverside Drive, Burbank
 Corner of Rose St. & Riverside Dr.
 South side of Riverside, across from
 Bob's Big Boy Restaurant

All performances are free.
 Seats are available on a first-come, first-serve basis one half hour prior to curtain.

MARK TAPER FORUM
 135 N. Grand Ave.
 Los Angeles, CA 90012

NON-PROFIT ORG.
 U.S. POSTAGE
PAID
 CENTER THEATRE
 GROUP

FALCON THEATRE 4252 Riverside Drive, Burbank

For information, call the ATW Hotline at 213.972.7267